

# JESSIE WOWK ELEMENTARY

Feb 9-13, 2026

**Monday, Feb 9**

**Tuesday, Feb 10**

**Wednesday, Feb 11**

**Thursday, Feb 12**

**Friday, Feb 13**

Pizza Hot lunch



Walking Wednesday



Girls Basketball  
vs. McKinney



Subway Lunch



PRO-D DAY  
SCHOOL CLOSED  
TO STUDENTS

## REMINDER

### School Learning Story

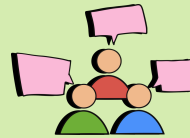
(Check out how classes are working towards our learning goal in the updated **action posts** [HERE](#))

“How might we increase student engagement in learning & deepen thinking through connected literacy experiences?”



### Conferences & Early Dismissal - Feb 26<sup>th</sup>

Learning Updates #3 (conferences) will be on Thursday, February 26<sup>th</sup>. Please note there is an Early Dismissal at 11:50am. Classroom teachers will send out scheduling information.



### Bring Your Own Utensils

Please send reusable utensils to school **everyday**, including hot lunch days. Thank you for helping the environment.



## Upcoming Dates



Feb 16

Family Day - no school

Feb 17

PAC Lunar New Year  
Event

Feb 18

Dancers of  
Damelahamid -  
performance

Feb 25

Pink Shirt Day &  
Assembly

## Scan the code to volunteer!



Wowk Fundraising & Events committee  
WhatsApp group



Wowk Hot Lunch Volunteers  
2025-2026  
WhatsApp group



## Basketball Home Games



Come and cheer on our Gr. 6/7  
Basketball Teams!



Tues, Feb 24<sup>th</sup> - Boys vs. Westward

## Dress for the Weather



With upcoming rainy days, please remember to send extra clothes and rain gear. We will be outside for recess rain or shine!

Extra clothes



Touque



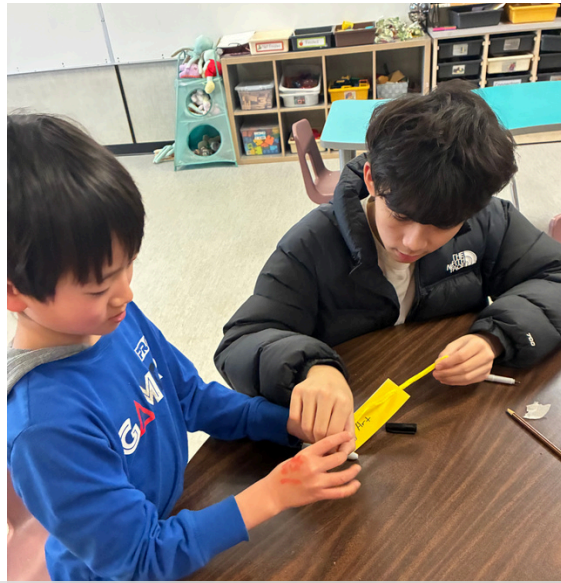
Gloves/Mittens



Rain boots

Layers & Rain  
Jacket





**Family Teams (mixed grade groups):** Our first Family Teams activity focused on the gifts we offer. Students created a collaborative beaded bracelet that represents their strengths. It was a wonderful way to connect and build relationships across the school.



**Animal Research Project:** working in partners to engage in a shared inquiry project.



**Maker Space Club: Origami**